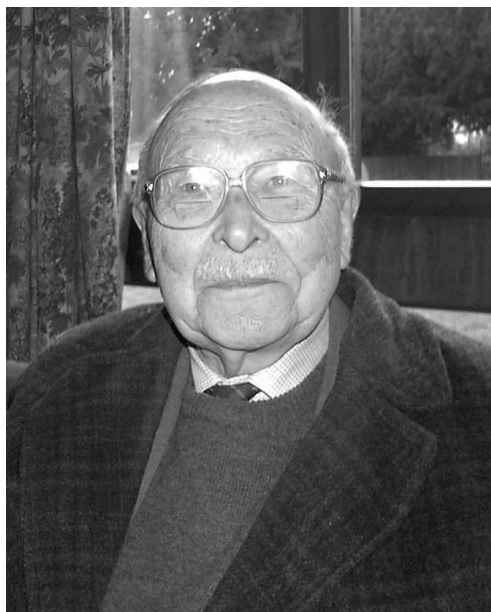


The Key Questions.....

Frank Gates



How old are you?

Eighty-Eight.

Where do you live?

Beckenham, Kent.

Do any other members of your family attend BPC?

No

What is your occupation?

Retired Electrical Engineer.

Do you have any particular hobbies & interests?

Bellringing. I started "tolling" at the suggestion of the sexton of St. Anne's, Sheffield, as quite a young boy. In my late teens I graduated to ringing the bells there, starting with the smallest.

What are your musical tastes?

I am not musical! Ringing uses my mathematical skills more than any musical ones.

What radio station do you listen to?

BBC 4.

Which other churches have you worshipped at?

St. Peter's. Cowfold, Sussex.

St. Mathew's. Manchester.

St. Anne's. Sheffield (now demolished).

I have rung at many other churches and at Canterbury, York, Manchester and Chichester Cathedrals.

What are your favourite TV programmes?

Historical and archaeological.

Which famous, living person would you like to meet, and why?

I have no particular interest in meeting any famous person.

Do you have a specific role at BPC?

I am a bellringer.

How long have you been worshipping at BPC?

1952 to date.

The incendiary bombs that fell when the Church was bombed had melted the original church bells. By the time I started to ring at BPC they had been recast from the surviving metal and all was repaired.

Is there any one aspect of the parish or worship that you particularly find attractive?

I do look forward to the big festivals of Easter and Christmas.

What was your first impression, when you began attending BPC?

I was employed in Manchester as an electrical engineer. My firm asked me to work two days a week in London before relocating there permanently. I stayed in Beckenham and used to walk out in the evenings to look for somewhere to live when we moved. It was then I heard Bromley Parish Church's bells and they drew me here. A sister church in